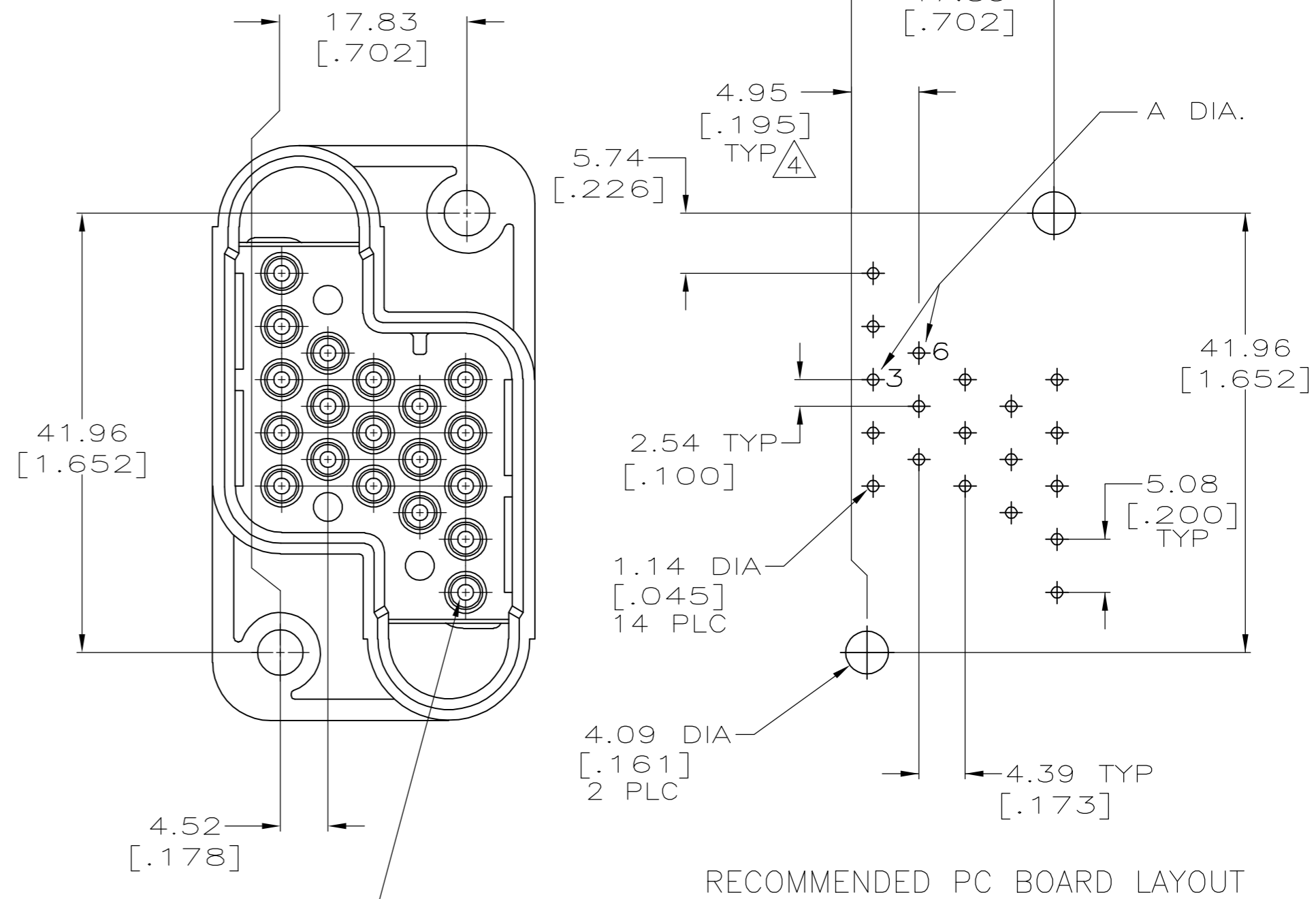
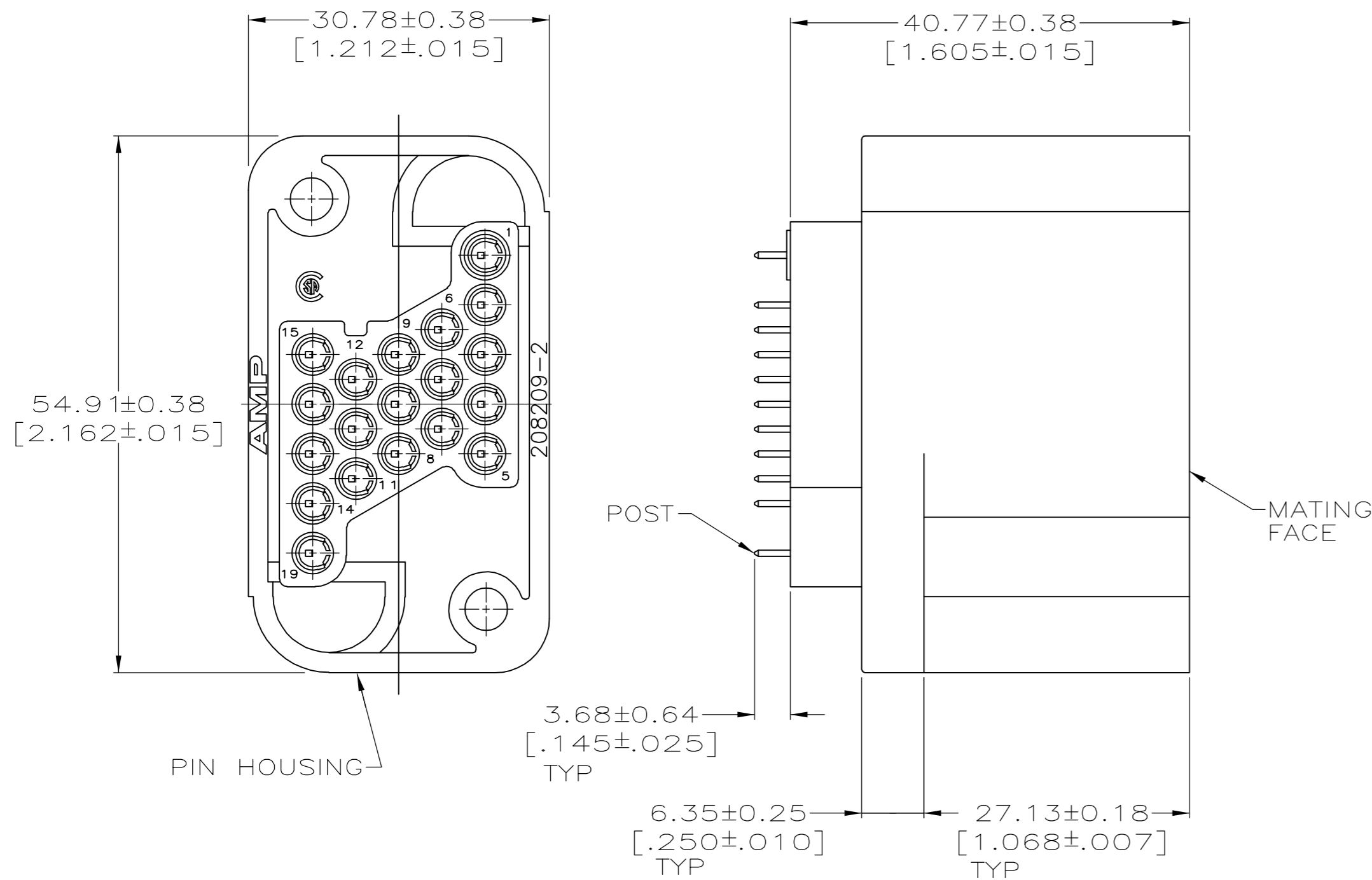


THIS DRAWING IS UNPUBLISHED. RELEASED FOR PUBLICATION
 © COPYRIGHT BY TYCO ELECTRONICS CORPORATION. ALL RIGHTS RESERVED.

LOC		DIST		REVISIONS			
P	LTR	DESCRIPTION		DATE	DWN	APVD	
FT	0	J1	REVISED PER ECO-07-002938	2/13/07	SS	GS	



- ① ALL POSITIONS LOADED WITH POSTED SIZE 16 PIN CONTACTS EXCEPT POSITION 1.
- ② 0.76um[.000030] MIN GOLD FOR A LENGTH OF 5.08[.200] MIN FROM MATING END, GOLD FLASH ON THE REMAINDER, BOTH OVER 1.27 [.000050] MIN NICKEL ON PIN END. POST END 2.54 TIN-LEAD OVER 2.54.
- 3. CONTACT ASSEMBLY SHOULD BE FULLY SEATED IN HOUSING PRIOR TO SOLDERING TO PRINTED CIRCUIT BOARD.
- ④ THIS DIMENSION HAS BEEN CHANGED FROM THE STANDARD MOUNTING DIMENSION BY 0.43[.017] DUE TO THE POSTED CONTACT.
- ⑤ POSTED SIZE 16 PIN CONTACTS LOADED IN POSITIONS 1,4,5,6,7,8,12,13, 14,15,16,AND 19. POSTED SIZE 16 GROUND PIN LOADED IN POSITIONS 2,3,9,10,11,17 AND 18.
- ⑥ SELECTIVELY LOADED IN POSITIONS 1, 2, 4, 5, 10 THRU 19 WITH POSTED CONTACT SIZE 16. POSITIONS 3 AND 6 ARE LOADED WITH A LONGER CONTACT (.045 SQUARE POST). POSITIONS 7, 8 AND 9 ARE NOT LOADED.
- ⑦ HOUSING: POLYESTER, BLACK
PIN CONTACT: BRASS
SPRING: STAINLESS STEEL
- ⑧ 0.76um[.000030] MIN GOLD FOR A LENGTH OF 5.08[.200] MIN FROM MATING END, GOLD FLASH ON THE REMAINDER, BOTH OVER 1.27 [.000050] MIN NICKEL ON PIN END. POST END 2.54 TIN OVER 2.54.
- ⑨ POSTED SIZE 16 PINS LOADED IN POSITIONS 1 THRU 8 AND 12 THRU 19. POSTED SIZE 16 GROUND PINS LOADED IN POSITIONS 9, 10 AND 11.

⑧	1.14 [.045]	⑨	213738-8
⑧	1.88 [.074]	⑥	213738-7
⑧	1.14 [.045]	⑤	213738-6
⑧	1.14 [.045]	ALL POSITIONS LOADED	213738-5
②	1.88 [.074]	⑥	213738-4
②	1.14 [.045]	⑤	213738-3
②	1.14 [.045]	ALL POSITIONS LOADED	213738-2
②	1.14 [.045]	①	213738-1
FINISH	A	CONTACT LOADING	PART NO.

DIMENSIONS:		TOLERANCES UNLESS OTHERWISE SPECIFIED:		DWN		tyco Electronics		Tyco Electronics Corporation		
mm [INCHES]				CHK	DATE	NAME	Harrisburg, Pa 17105-3608			
0 PLC	± -	1 PLC	± -	R. STONE	10FEB92	A. TRAVIS	SIZE	CAGE CODE	DRAWING NO	RESTRICTED TO
1 PLC	± -	2 PLC	± .13[.005]	APVD	10FEB92	PRODUCT SPEC	A2	00779	C=213738	-
2 PLC	± -	3 PLC	± -	APPLICATION SPEC		WEIGHT	SCALE	SHEET	OF	REV
3 PLC	± -	4 PLC	± -			CUSTOMER DRAWING	2:1	1	1	J1
4 PLC	± -	ANGLES	± -							
FINISH	-									